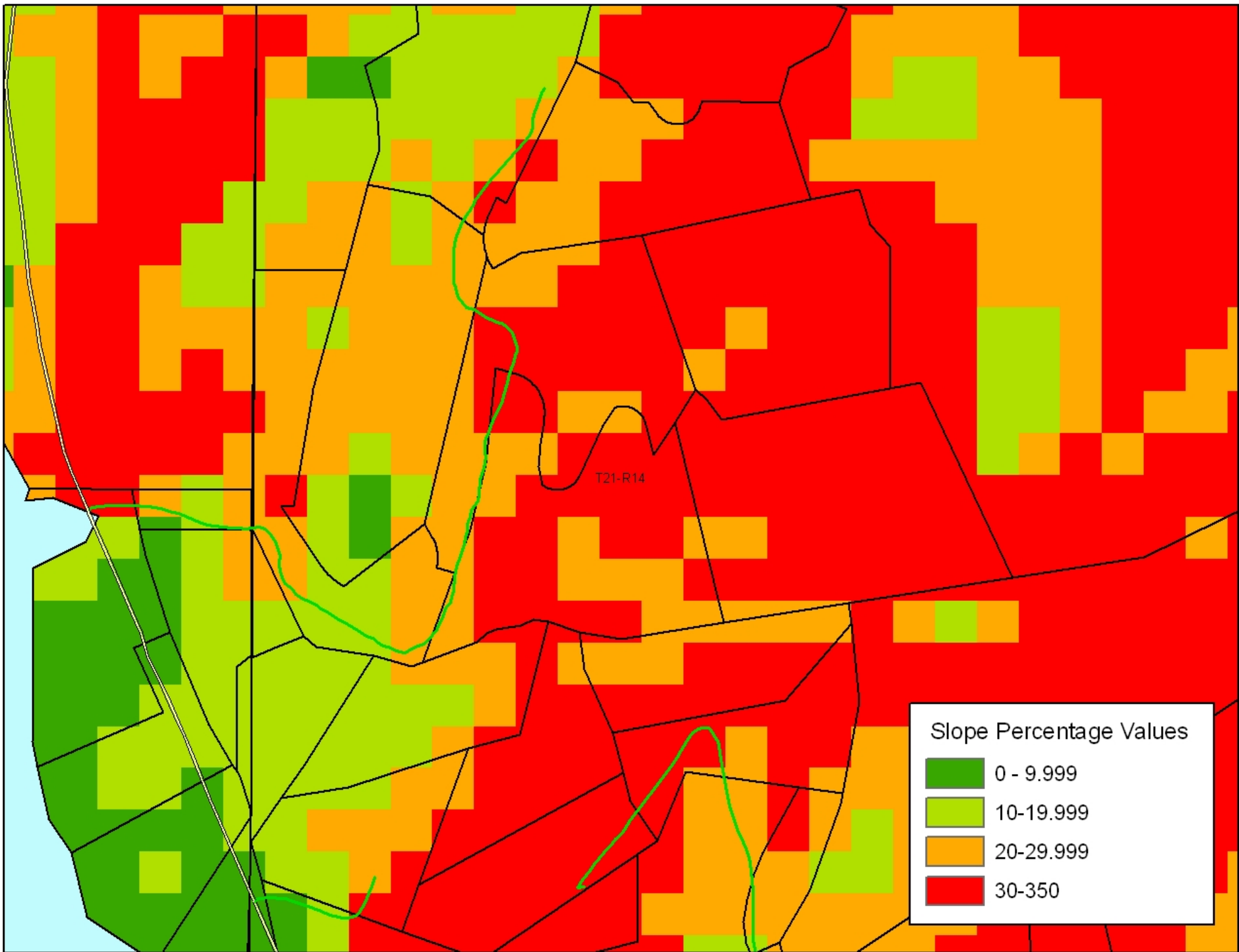


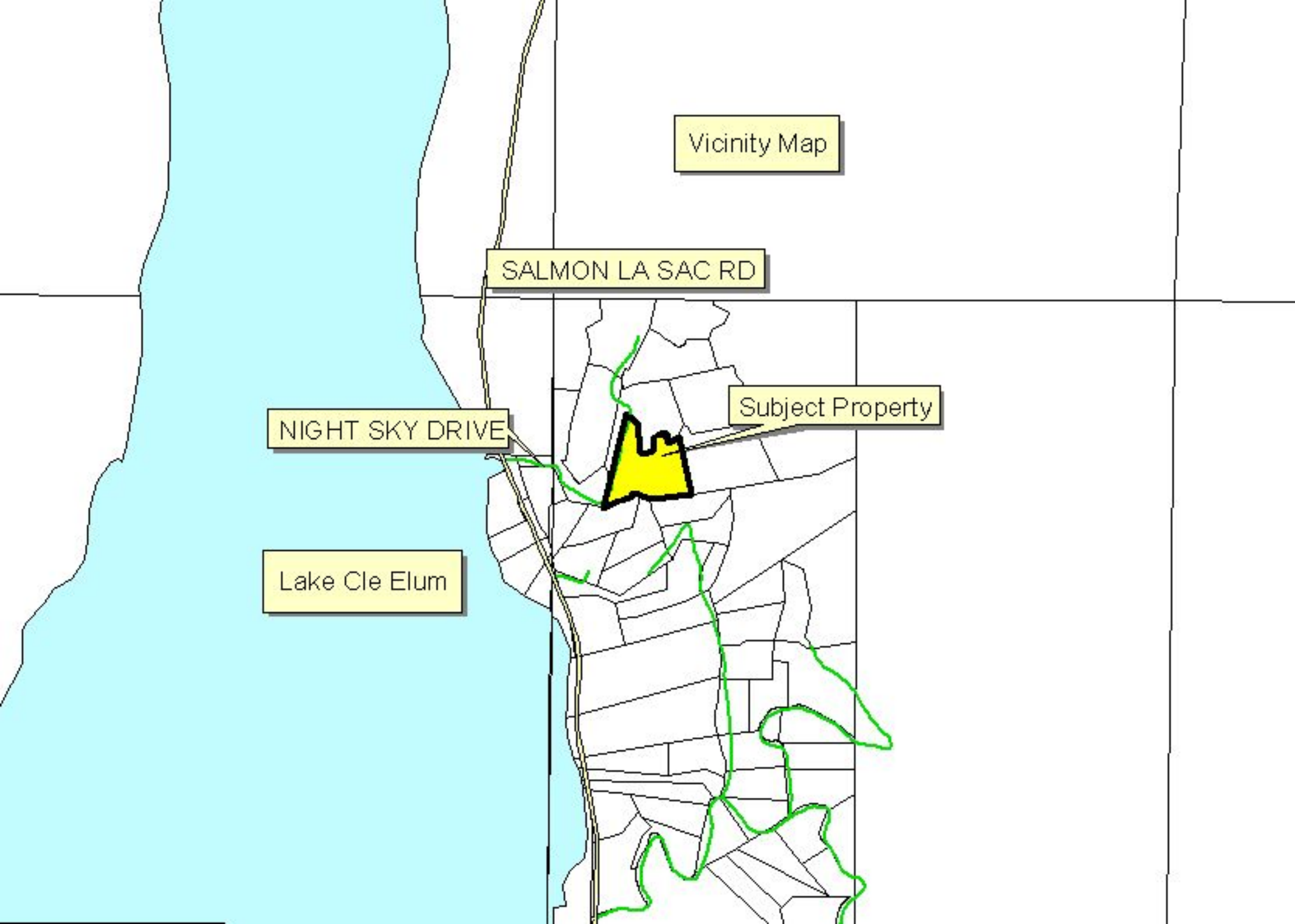


The image is a map of a coastal region, likely Roslyn, New York. It features a grid of latitude and longitude lines. A yellow callout box labeled "Subject Property" points to a specific location on the coast. Another yellow callout box labeled "Fire District 6 (Roslyn)" points to a larger area on the coast, shaded in light orange. The map shows a coastline on the left side, with a light blue area representing water. The land area is divided into various shapes, likely representing property boundaries or district boundaries. The grid lines are black and extend across the entire map.

Subject Property

Fire District 6 (Roslyn)





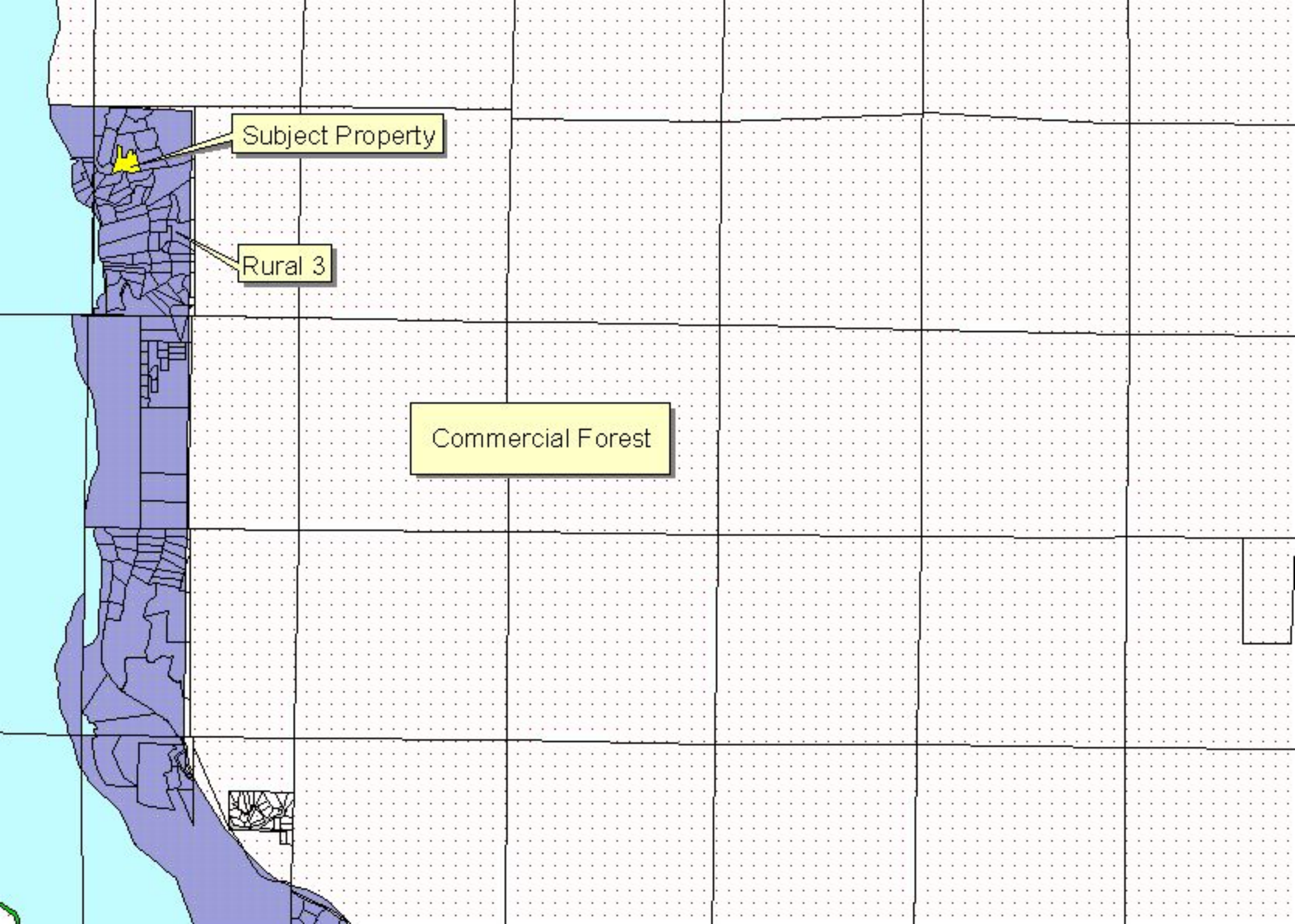
Vicinity Map

SALMON LA SAC RD

NIGHT SKY DRIVE

Lake Cle Elum

Subject Property



Subject Property

Rural 3

Commercial Forest